



Republic of the Philippines
Department of Environment and Natural Resources
Visayas Avenue, Diliman, Quezon City
Tel Nos. 929-6626 to 29; 929-6633 to 35
929-7041 to 43; 929-6252; 929-1669
Website: <http://www.denr.gov.ph> / E-mail: web@denr.gov.ph

MEMORANDUM

FOR : **THE DIRECTORS**
Environmental Management Bureau
Mines and Geosciences Bureau
Forest Management Bureau
Biodiversity Management Bureau
Ecosystems Research and Development Bureau
Land Management Bureau

THE ADMINISTRATOR
National Mapping and Resource Information Authority

THE EXECUTIVE DIRECTOR
National Water Resources Board

FROM : **THE DIRECTOR**
Climate Change Service

SUBJECT : **REQUEST FOR ASSESSMENTS AND REFERENCES RELATED
TO THE STAGES OF THE GREEN ASSESSMENT FRAMEWORK**

DATE : 19 December 2022

This refers to the current efforts to harmonize the Green Assessment Framework (GAF) within the department. This is being done to stocktake existing assessments under different offices. The GAF is also an identified tool that can possibly be used by the DENR to ensure active involvement in NDRRMC as one of its member-agencies, particularly during the Rapid Damage Assessment and Needs Analysis (RDANA) or the Post Disaster Needs Assessments (PDNA) process, to ensure that damages to ecosystems by disasters are taken into account.

The Green Assessment Framework is divided into four (4) stages, namely the 1) Rapid Appraisal, 2) Ground Validation Surveys, 3) Analysis and Interpretation, and 4) Green Resilience Planning. Attached are documents for your reference.

With this, may we request your office to submit a list of assessments that may be related to the Green Assessment and relevant references, if any until **Thursday, December 29, 2022**. The inputs will create a clearer view to prevent duplication of work and strategically adopt the assessment as a post-disaster tool for the department.

Should you have queries and concerns, CCS key staff Raquel Ortega (rscortega@denr.gov.ph) and JM Reboton (jmnreboton@denr.gov.ph) can be contacted through 02-8928-1194.

Thank you for your usual support and cooperation.


ELENIDA DEL ROSARIO BASUG

Green Assessment Framework

BACKGROUND

- In January 2022, the USAID SIBOL¹ launched the green assessment in Palawan in response to the devastation brought by typhoon Odette in December 2021. The results of the assessment will be used as a basis to develop reconstruction and rehabilitation of green ecosystems to ensure recovery and reduce risks from similar disasters in the future.
- The framework consists of four stages. **Stage 1** is conducting rapid appraisals by identifying any changes in forest surface cover and ecosystem assets. **Stage 2** employs both centralized streams of data gathering on defined damage hotspots in order to widen the coverage of data capture. **Stage 3** will analyze and visualize the information gathered from Stages 1 and 2 to enable assessment of the extent of damage and changes in land use. Finally, **Stage 4** aims, with the cooperation of key stakeholders, to formulate management recommendations and plans for restoration and rehabilitation, and resilience planning.
- On March 15, 2022, an initial meeting was held with Undersecretary Analiza Rebuelta-Teh and Dir Elenida Basug of Climate Change Service (CCS) with representatives from USAID SIBOL to discuss the green assessment and its role in post disaster assessment. The DENR recognized its use in the environmental sector as a tool for ecosystem assessment not only for reconstruction but also for planning future activities/measures.
- Upon consultation with the then Secretary and Task Force Build Back Better (TFBBB) Chairperson, Roy A. Cimatu, it was recommended to explore the possibility to adopt the framework to DENR regular programs. The CCS as secretariat to the Task Force Build Back Better was instructed to coordinate with USAID SIBOL.
- In June 2022, CCS, Forest Management Bureau, Biodiversity Management Bureau, Mines and Geosciences Bureau, DENR Regions 6, 7, 8, 10, and 13 were invited to join training and assessments to be oriented on the Framework. Representatives from the Regional Offices mentioned were able to attend.
- On August 10, 2022, with the appointment of Secretary Maria-Antonia Yulo-Loyzaga, the CCS included in its briefing the adoption for the green assessment framework. The Secretary instructed the service to continue exploring options for its adoption. After the meeting, coordination through

¹ Philippine Sustainable Interventions for Biodiversity, Oceans and Landscapes (SIBOL) is a 5-year project launched by the United States Agency for International Development (USAID) that will support the management of the country's natural resources and combat environmental crimes. The Research Triangle Institute International serves as its lead implementer.

emails and meetings were done to identify points for collaboration under the green assessment and other projects.

CAPACITY BUILDING

- On September 07, 2022, a meeting with CCS and USAID SIBOL representatives was conducted to finalize green assessment related assistance. It was agreed that USAID SIBOL can provide the resources for capacity building to conduct the green assessment for DENR.
- On October 17-21, 2022, Stage 1: Rapid Appraisal Training for the Visayas-Mindanao Cluster was conducted in Cebu City. On November 14-18, 2022, the training for the Luzon Cluster will be held in Clark, Pampanga.

NEXT STEPS

Internal discussions with concerned Offices on:

- Adoption and mainstreaming of the green assessment framework in the Department
- Harmonization of schedule of activities (meetings, workshops/trainings, pilot testings, etc.)

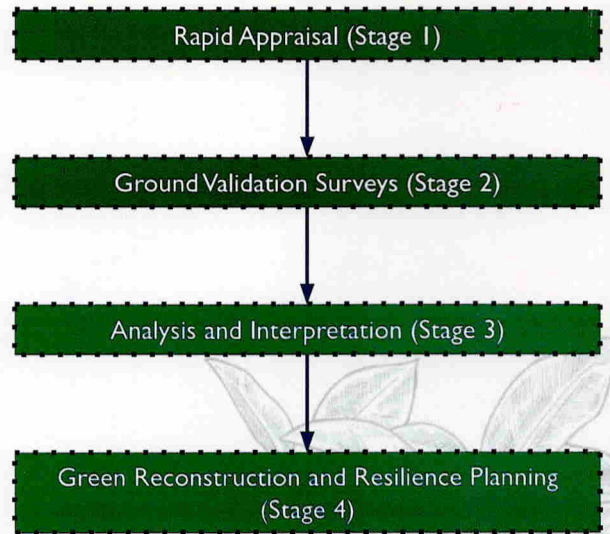
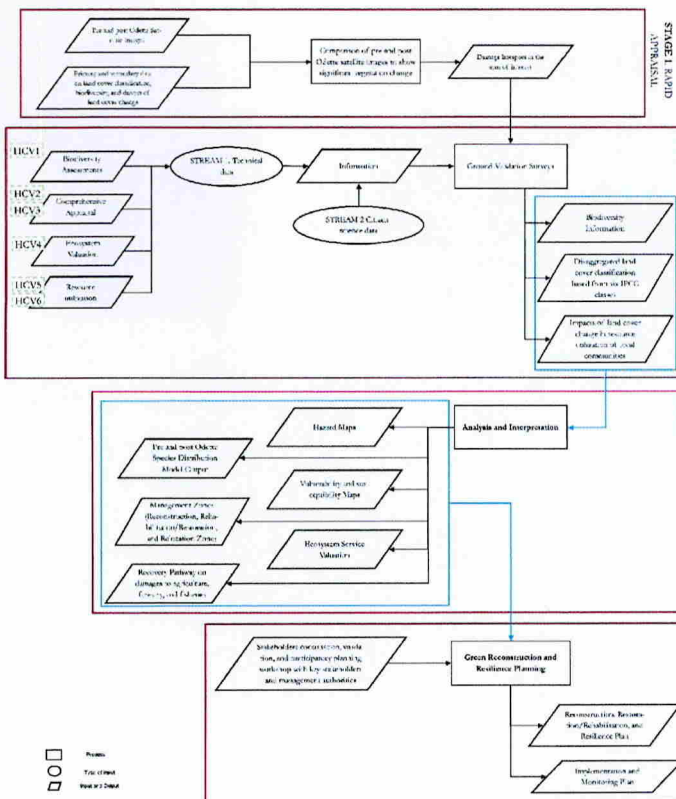


Sustainable Interventions for Biodiversity, Oceans and Landscapes Project

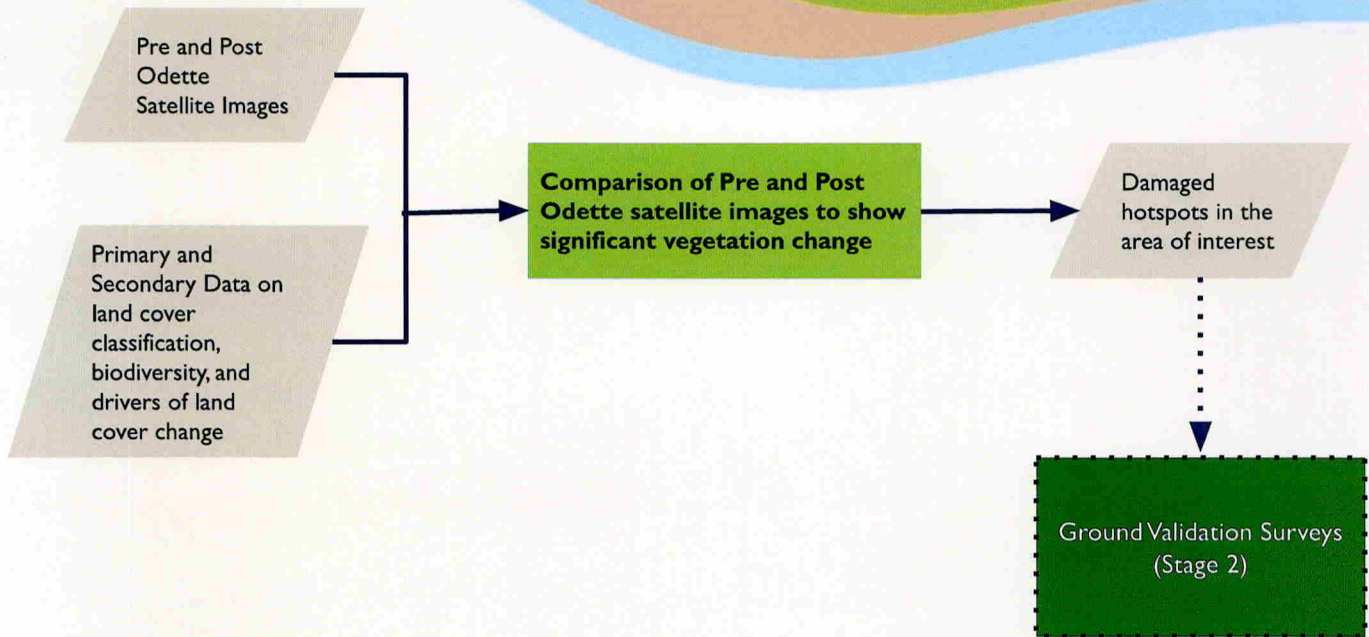


GREEN ASSESSMENT FRAMEWORK

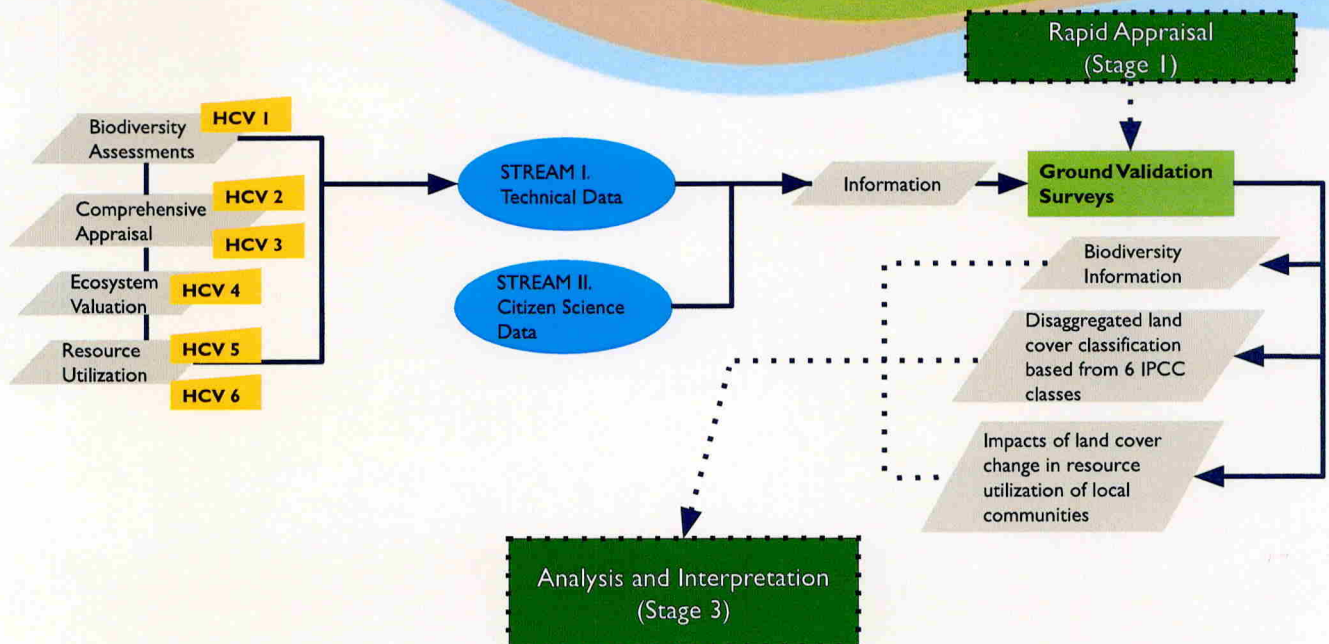
March 01, 2022



Green Assessment towards a Green Recovery/Reconstruction and Resilience: Stage 1. Rapid Appraisal

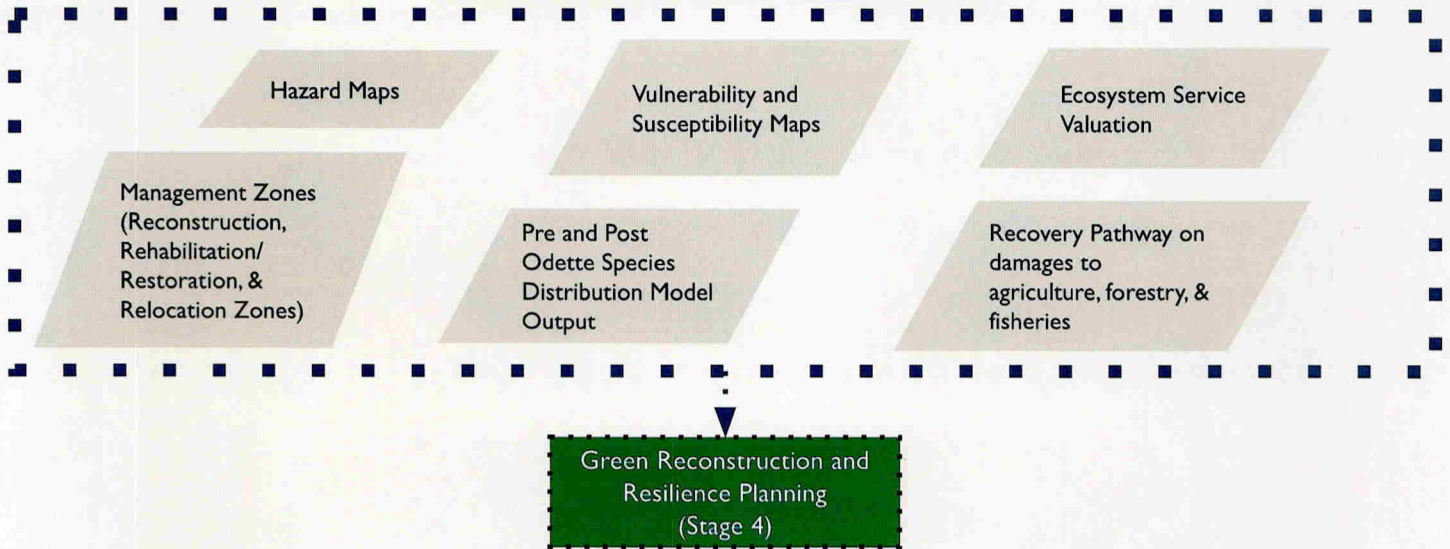


Green Assessment towards a Green Recovery/Reconstruction and Resilience: Stage 2. Ground Validation Surveys to assess impacts to HCVs

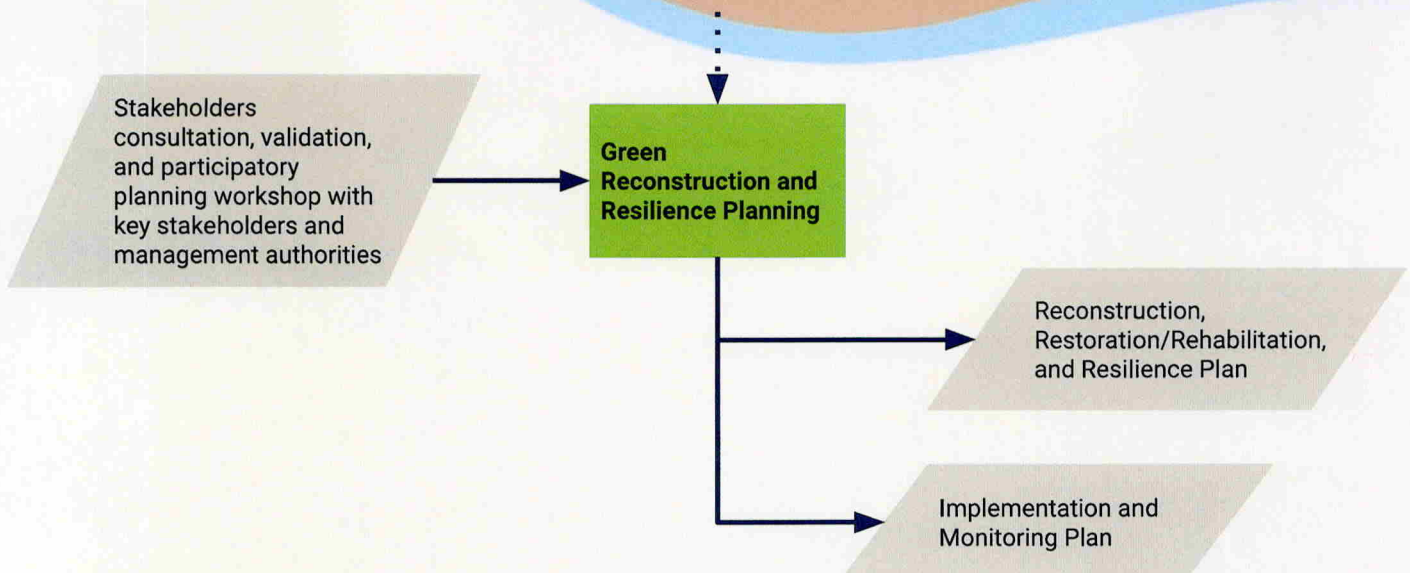


Green Assessment towards a Green Recovery/Reconstruction and Resilience: Stage 3. Data Analysis and Interpretation

Analysis and Interpretation



Green Assessment towards a Green Recovery/Reconstruction and Resilience: Stage 4. Green Reconstruction & Resilience Planning



Expected Outputs



- Map
 - Hazard maps
 - Vulnerability/susceptibility maps
 - Community resource map on damage hotspots
 - Pre and post Odette species distribution models to see changes and impacts on species, and ecosystem/habitat refugia
 - Management zones map (e.g.reconstruction and restoration/rehabilitation zone; and relocation zones)
- Pre and Post Odette ecosystem service valuation
- Skills upgrade of local community partners and stakeholders in the use of technology-based techniques for data capture and monitoring
- Comprehensive plans for restoration, green reconstruction, rehabilitation, and resilience

Sustainable Interventions for Biodiversity, Oceans and Landscapes

Areas Covered by the Green Assessment

Cleopatra's Needle KBA <i>Puerto Princesa City</i>		PPSRNP <i>Puerto Princesa City</i>
1. Binduyan*	15. Salvacion	1. Cabayugan
2. Concepcion*		2. Marufinas
3. Langogan*	<i>San Vicente</i>	3. New Panggangan
4. New Panggangan*	1. Caruray	4. Tagabinet
5. San Rafael*	2. Port Barton	
6. Tagabinet*		Outside SIBOL (Puerto Princesa City)
7. Tanabag*	<i>Roxas</i>	1. Bagong Bayan
8. Babuyan	1. Caramay	2. Bahile
9. Buenavista	2. Jolo	3. Napsan
10. Lucbuan	3. Magara	4. Simpocan
11. Macarascas	4. Salvacion	
12. Manalo	5. San Miguel	
13. Maoyon	6. Tinitian	
14. Maruyugon		

*Sites within CNCH (Cleopatra's Needle Critical Habitat)

Sustainable Interventions for Biodiversity, Oceans and Landscapes

ACTIVITIES	January				February				March				April				May				June			
	1	2	3	4	1	2	3	4	1	2	3	4	1	2	3	4	1	2	3	4	1	2	3	4
Develop data model																								
Stage 1: Collection of satellite images in impacted areas																								
Stage 2: Ground validation surveys to assess impacts on HCV																								
Activity 1. Comprehensive Appraisal																								
- Stream 1. Aerial Ground Truthing MARCH 21 start of survey																								
- Stream 2. Capacity building and stakeholder participation March 7 to 8 Virtual training on remote sensing March 14 to 18 Aerial Ground Truth Training																								

Timeline - ACTIVITY 1

Remote Sensing Training (OJT) Mode: Virtual Qualifications: Background on GIS	Aerial Ground truthing Training Mode: Face to Face Qualifications: Experience on drone sampling	Ground Truth Surveys (Comprehensive Appraisal) Mode: Face to Face, Field Conditions Qualifications: Experience on drone sampling
<ol style="list-style-type: none"> PCSDS Central office - 3pax PCSDS North district office - 3pax DENR PENRO - 2pax DENR CENRO PPC - 1pax DENR CENRO Roxas - 1 pax City ENRO (PPC) - 2 pax MENRO (Roxas) - 1 pax MENRO (San Vicente) - 1 pax 	<ol style="list-style-type: none"> PCSDS Central office - 3pax PCSDS North district office - 3pax DENR PENRO - 2pax DENR CENRO PPC - 1pax DENR CENRO Roxas - 2 pax City ENRO (PPC) - 2 pax MENRO (Roxas) - 2 pax MENRO (San Vicente) - 1 pax 	<ol style="list-style-type: none"> PCSDS Central office - 3pax PCSDS North district office - 3pax DENR PENRO - 2pax DENR CENRO PPC - 1pax DENR CENRO Roxas - 1 pax City Planning - 1 pax City DRR - 1 pax MENRO (Roxas) - 2 pax MENRO (San Vicente) - 1 pax Local experts/guides - 6pax (participants will join the fieldwork in their respective municipality: 2pax from each municipality), this is part of the Cash for Work program

Note:

- Participants joining the ground truth surveys **must attend** the aerial ground truth training.
- Participants for the remote sensing training can be different from those joining the aerial ground truth training.
- Five drone teams will be formed.

Drone Team Composition:

- 2 Drones from SIBOL
- 1 Drone from PCSD
- 1 Drone from PCSDS DMD North
- 2 Drones from PENRO (1 sure drone)
- 1 Drone from City Planning

= 5 drone teams

ACTIVITIES	March				April				May				June			
	1	2	3	4	1	2	3	4	1	2	3	4	1	2	3	4
Activity 2. Biodiversity Assessment																
<ul style="list-style-type: none"> - Stream 1. Rapid biodiversity Assessment <p>Indicative timeline (<u>will depend on the conditions at the field</u>):</p> <ul style="list-style-type: none"> • March 9 - Calibration and Planning • March 11 to March 22 - Puerto Princesa Subterranean River National Park • March 28 to April 8 - Cleopatra's Needle (will include Puerto Princesa City, San Vicente and Roxas, details about the jump off points/barangays TBD) • April 18 to 29 - Bacungan-Napsan area 																

Timeline - ACTIVITY 2

Participants

- Field conditions
- Will stay in the field for 10 to 12 days straight

Puerto Princesa Subterranean River National Park (two campsites)

- 16 parataxonomists (local experts, community members, will be trained on collecting biodiversity data)
- 14 protected area staff, including forest rangers
- 1 cook
- 70 porters (per trip only, will not join for the duration of the activity)

Cleopatra's Needle (two campsites: 1 in CNCH, 1 in Roxas or San Vicente)

- 16 parataxonomists (local experts, community members, will be trained on collecting biodiversity data)
- For CNCH area: CNCH staff
- For Roxas or San Vicente area: MENRO staff
- 1 cook
- 70 porters (per trip only, will not join for the duration of the activity)

Bacungan-Napsan area (one campsite)

- 16 parataxonomists (local experts, community members, will be trained on collecting biodiversity data)
- City ENRO staff
- 1 cook
- 35 porters (per trip only, will not join for the duration of the activity)

ACTIVITIES	March				April				May				June			
	1	2	3	4	1	2	3	4	1	2	3	4	1	2	3	4
Activity 2. Biodiversity Assessment																
- Stream 2. Citizen Science Information Gathering																
Timeline for the training:																
March 22 to April 7, 2022 - Puerto Princesa City Batch																
April 19 to 21, 2022 - San Vicente Batch																
April 25 to May 25, 2022 - Roxas Batch																
June 2022 - start of monthly monitoring for the Cash for Work Program																

Timeline - ACTIVITY 2 (Citizen Science)

Citizen Science Information Gathering



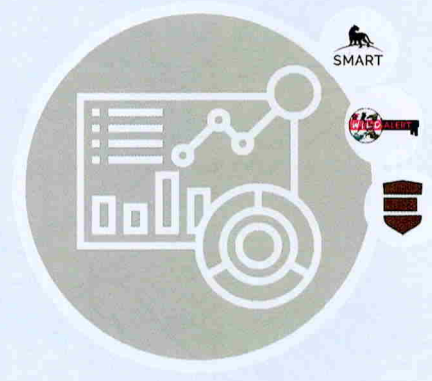
Technology Solutions



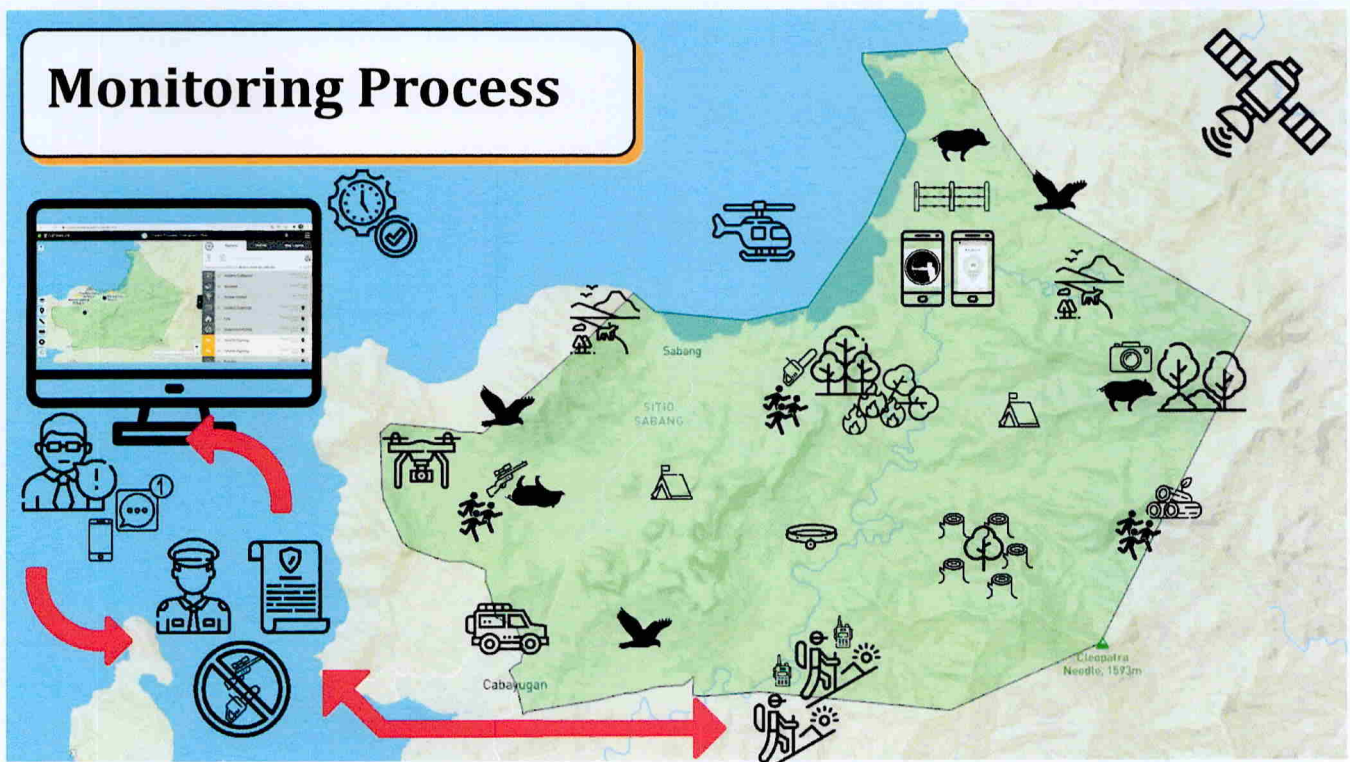
Boots on the Ground

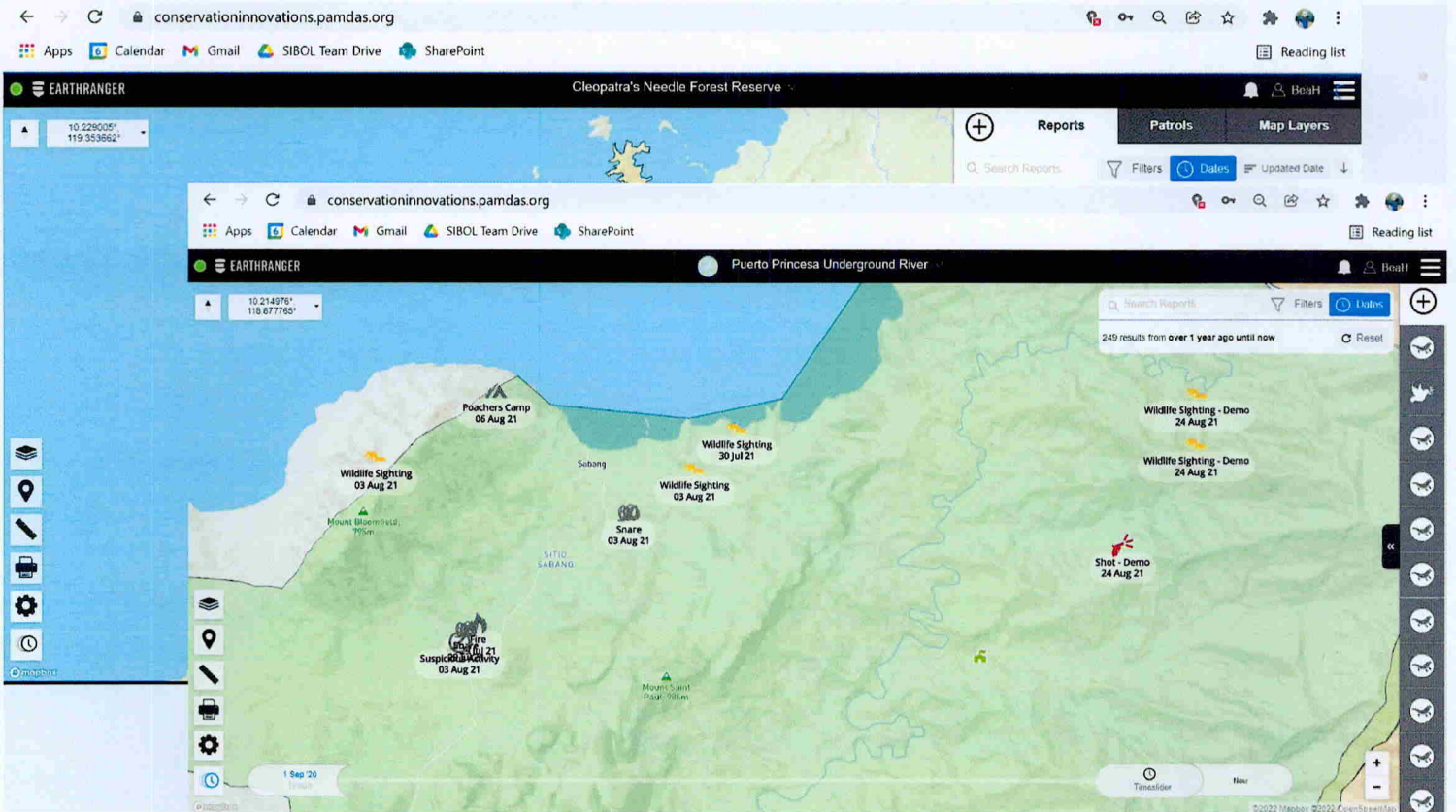


Remote Data Capture



Data Management and Visualization





ACTIVITIES	January				February				March				April				May				June			
	1	2	3	4	1	2	3	4	1	2	3	4	1	2	3	4	1	2	3	4	1	2	3	4
Activity 3. Study of land-use change																								
- Stream 1. Ground Validation on Drivers of Change																								
March 11 to April 11 - Ground validation surveys																								
April 20 to 23 - Focus Group Discussions																								
- Stream 2. Citizen Science Information Gathering																								

Participants - 2 local guides per barangay to be visited

Preliminary results: Vegetation change pre-Odette and post-Odette



Processes involved;

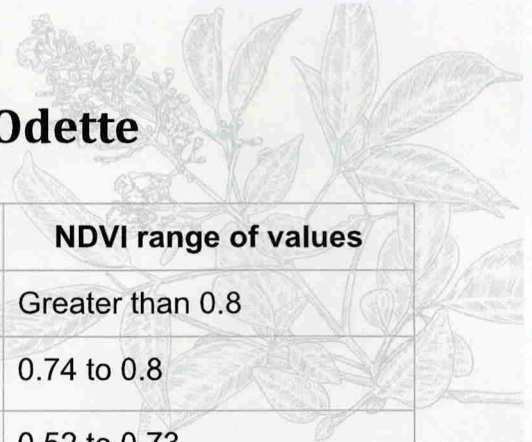
- Stage 1, rapid mapping to quickly determine where apparent changes, in terms of vegetation loss or damage, have occurred;
- Live green vegetation we detect through remote sensing; and
- Calculated as vegetation index values $(NIR-Red)/(NIR+Red)$.

Assumptions:

- Live vegetation has moderate to high NDVI values (0.74 to 0.84);
- Damaged vegetation, vegetation loss or barren land (< 0.34); and
- NDVI values inferred from published literature and locally observed values.

Sustainable Interventions for Biodiversity, Oceans and Landscapes

Preliminary results: Vegetation change pre-Odette and post-Odette

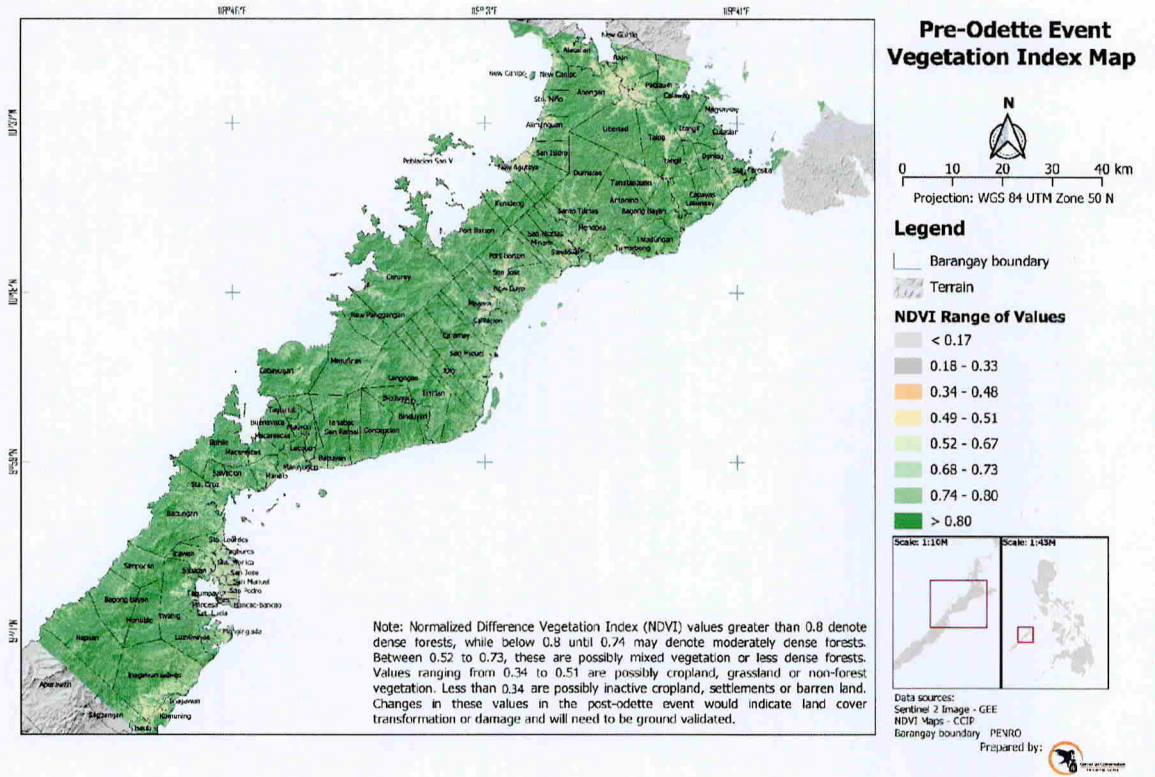


Possible land cover categories*	NDVI range of values
Dense forests	Greater than 0.8
Moderately dense forests	0.74 to 0.8
Mixed vegetation or less dense forests	0.52 to 0.73
Cropland, grassland or non-forest vegetation	0.34 to 0.51
Inactive cropland, settlement infrastructure or barren land	Less than 0.34

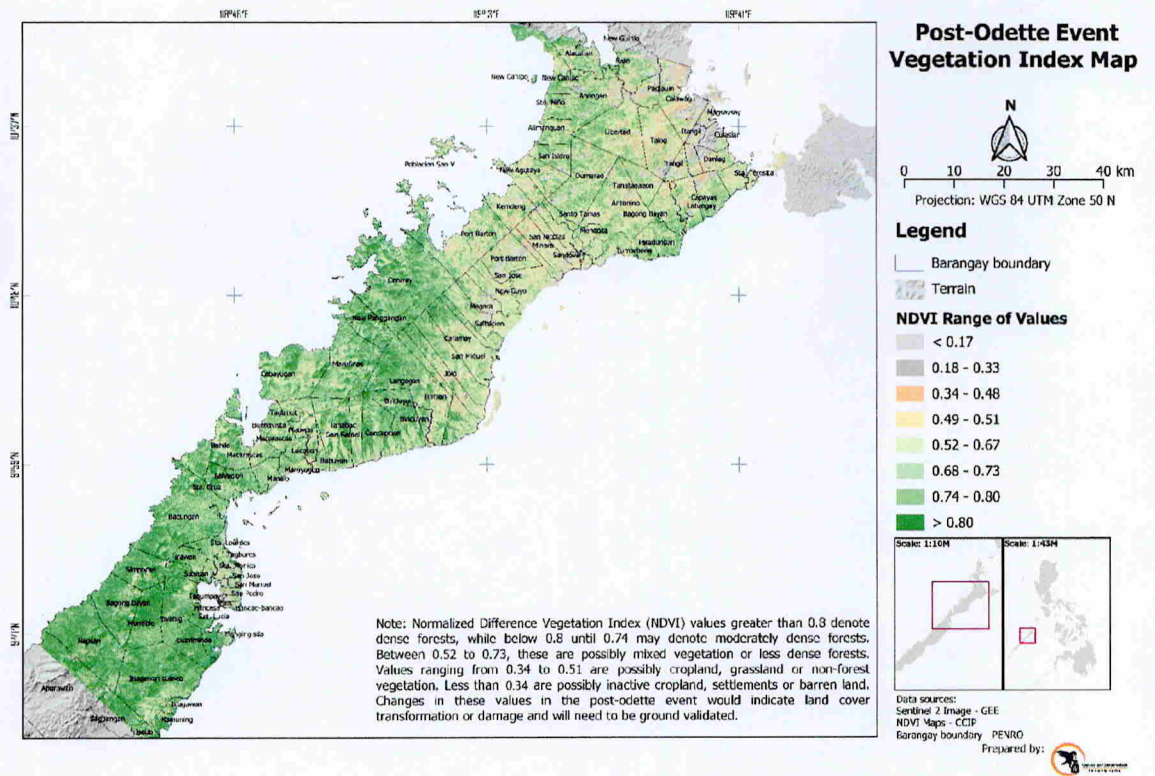
*will be further ground validated and reclassified in stage 2 process

Sustainable Interventions for Biodiversity, Oceans and Landscapes

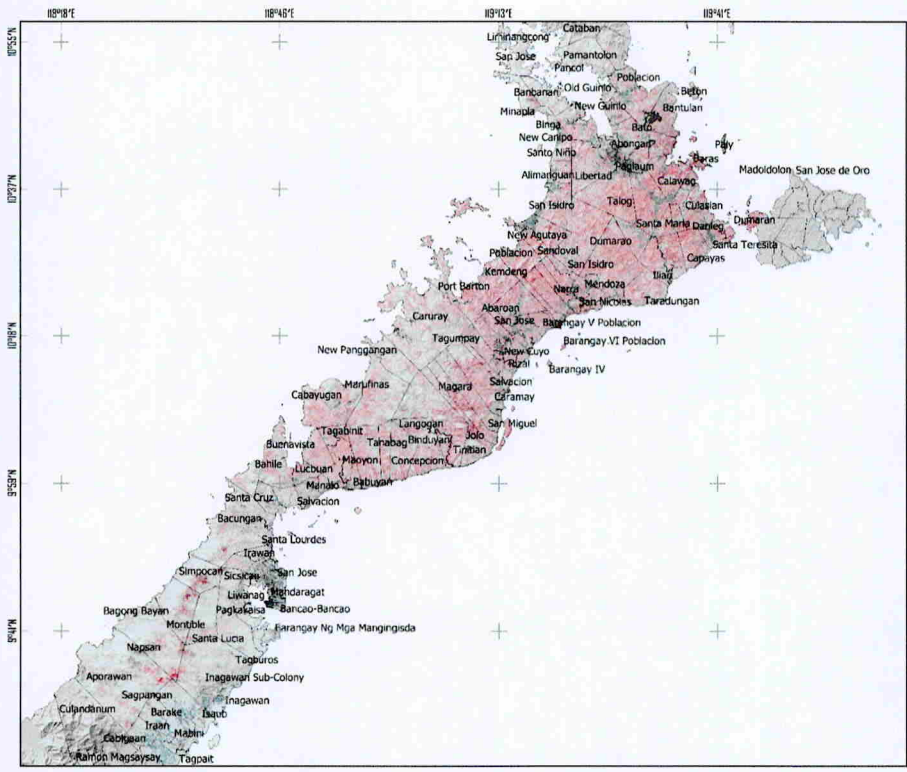
pre-Odette



post-Odette

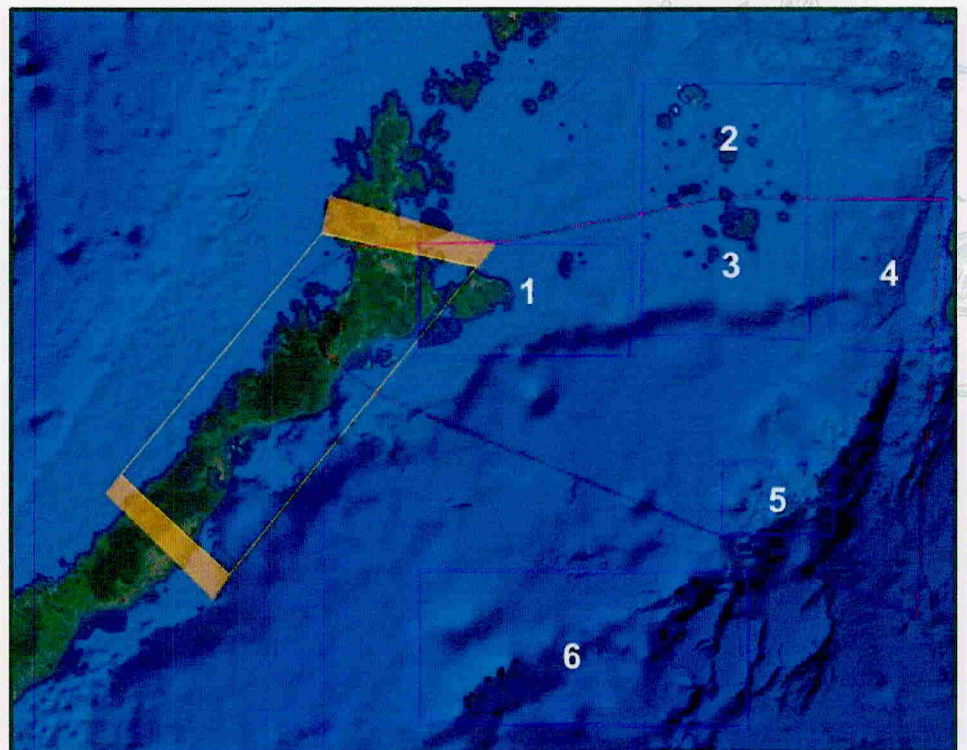


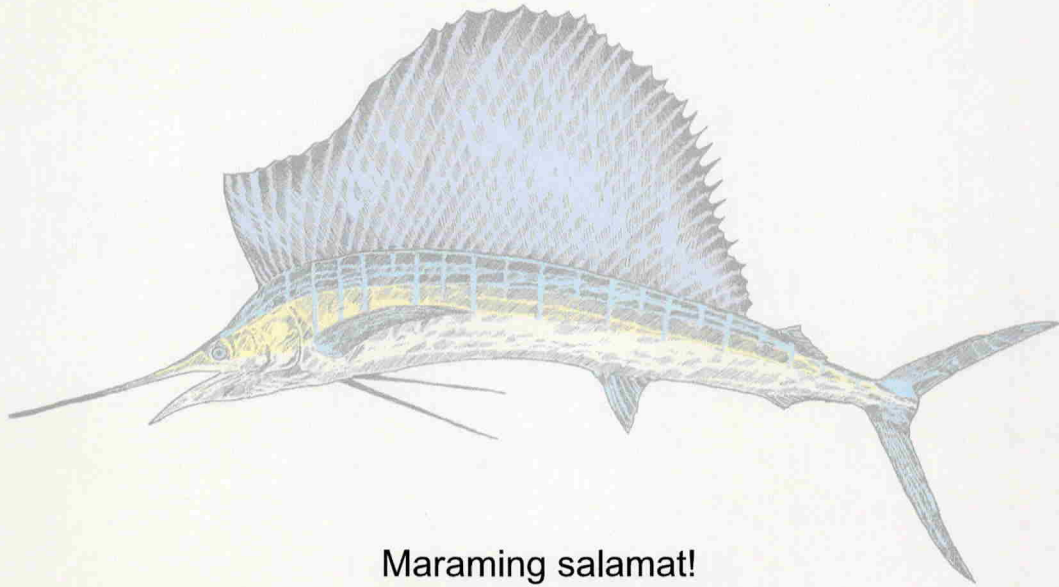
...where changes occurred from pre- to post-Odette



...additional mapping, but on PCSD's "to dos"

- AOI PCSD
- Proposed AOI for PCSD
- CCIP AOI
- Additional extent





Maraming salamat!

Sustainable Interventions for Biodiversity, Oceans and Landscapes Project