



Republic of the Philippines
Department of Environment and Natural Resources
Visayas Avenue, Diliman, Quezon City
Tel Nos. 929-6626 to 29; 929-6633 to 35
929-7041 to 43; 929-6252; 929-1669
Website: <http://www.denr.gov.ph> / E-mail: web@denr.gov.ph

MEMORANDUM

FOR : **The OIC, Office of the Secretary and Undersecretary**
Field Operations (Luzon and Visayas) and Environment
The Undersecretary
Policy, Planning and International Affairs

The Assistant Director
Environmental Management Bureau
The Division Chief and Section Chiefs
Environmental Impact Assessment and Management Division

The Directors
Foreign Assisted and Special Project Service
Climate Change Service

FROM : **THE UNDERSECRETARY**
Finance, Information Systems and Climate Change

SUBJECT : **Invitation to Attend Meeting regarding ADB's Technical Assistance on Guidelines for Environmental Clearance of Onshore and Offshore Wind and Solar Systems**

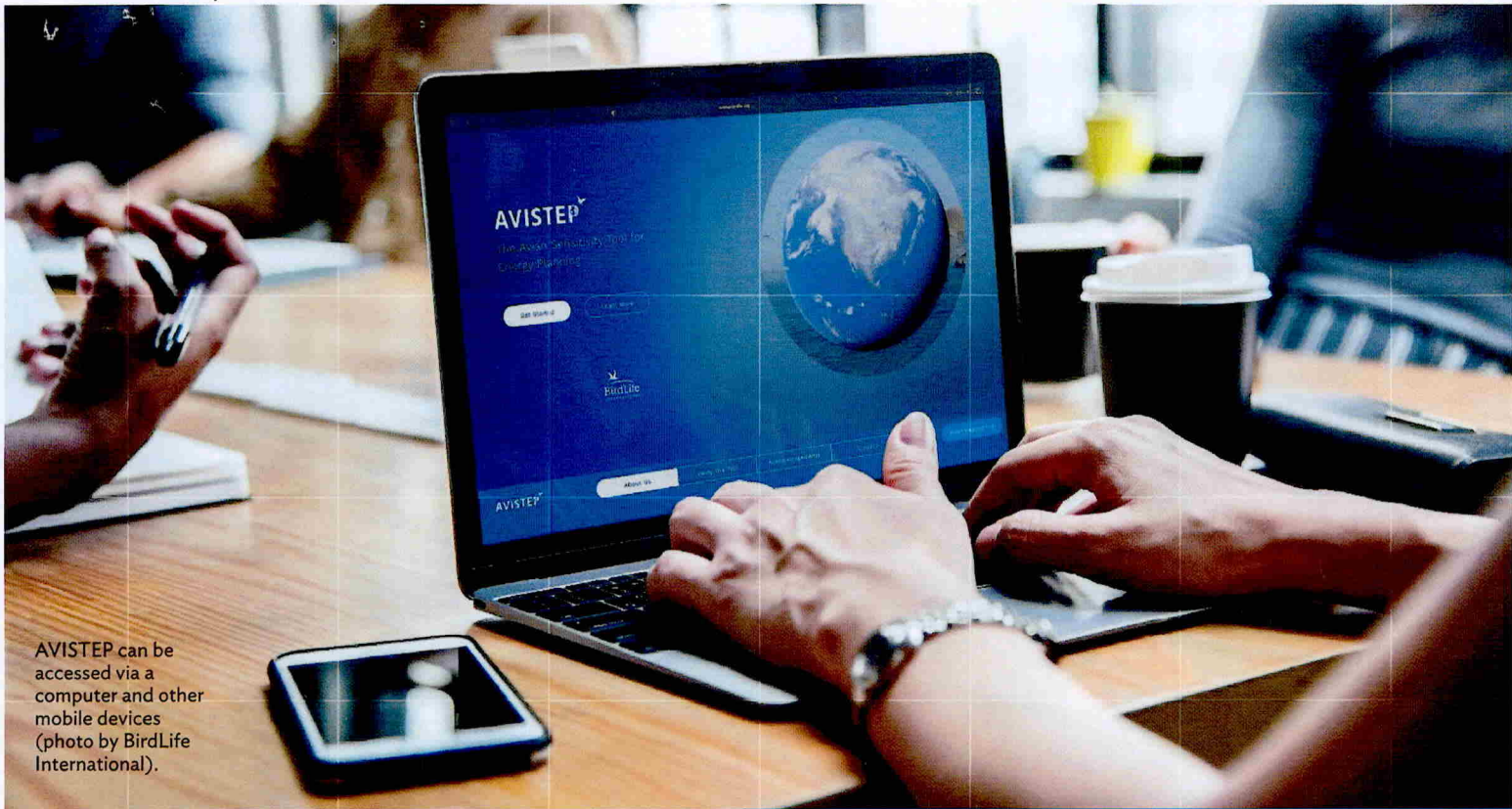
DATE : 19 December 2022

This refers to the Technical Assistance from Asian Development Bank (ADB) on the above subject. Among others to be discussed is the development of an assessment tool called AVISTEP, a tool that is already up and running with data for four countries (India, Nepal, Thailand and Vietnam) to assess biodiversity risks for wind and solar projects. This could be expanded to cover the Philippines, and could be integrated or used in planning and permit considerations, like the environment impact assessment for renewable energy projects. In this regard, we invite you to attend a meeting with ADB's team on **11 January 2023, Wednesday, 9:30 A.M.** at the 2nd floor, **EMB-ERLSD Conference Room**.

Should there be queries and concerns, CCS key staff Ms. Raquel Ortega (rsortega@denr.gov.ph) and Mr. Carl Santiago (clsantiago@denr.gov.ph) can be contacted by your staff through 02-8928-1194.


ATTY. ANALIZA REBUELTA TEH

cc: Mr. Bruce Dunn, Director,
Safeguards Division Sustainable Development and Climate Change Department
Asian Development Bank



AVISTEP can be accessed via a computer and other mobile devices (photo by BirdLife International).

AVISTEP provides assessments at a range of spatial scales. As such, it can be used across the permitting process—at the outset in support of national and subnational strategic planning and later for site-level screening and evaluation.

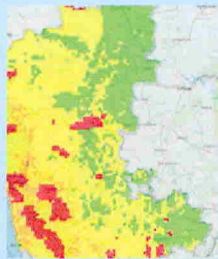
The sensitivity assessment available through AVISTEP are provided at a resolution of 5 km x 5 km, an ideal scale for preliminary site-level assessment and screening.

The sensitivity score for each grid square is calculated from information on a range of factors, including the presence of sensitive bird species, sensitive habitats, and overlap with sensitive sites such as protected areas and Important Bird and Biodiversity Areas (IBAs).

NATIONAL



SUBNATIONAL



LOCAL



ENERGY INFRASTRUCTURE TYPES

To support responsible planning, AVISTEP provides a detailed spatial assessment of avian sensitivity in relation to the following types of energy infrastructure:



ONSHORE WIND



OFFSHORE WIND



PHOTOVOLTAIC (PV) SOLAR



**OVERHEAD TRANSMISSION LINES
HIGH VOLTAGE**



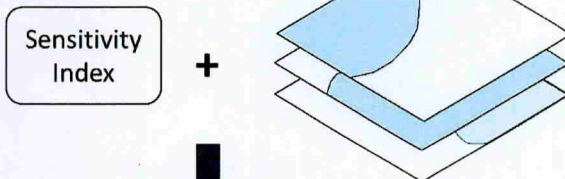
**OVERHEAD DISTRIBUTION LINES
LOW-MEDIUM VOLTAGE**

METHODOLOGY

Sensitivity indexes have been created for each of the energy infrastructure types. For instance, the sensitivity index for onshore wind includes metrics on collision susceptibility, displacement susceptibility, natural mortality rates, conservation status, and endemism. Once the species at risk are identified in the potential project area/s, modelled distributional maps are fitted to a grid system measuring 5 kilometer x 5 kilometer. A “species sensitivity map” is generated based on the sensitivity scores of all species at risk presented within a grid cell, with additional land use and land cover data on the potential project area/s also incorporated.

1. The sensitivity indexes are calculated for each species and energy infrastructure.

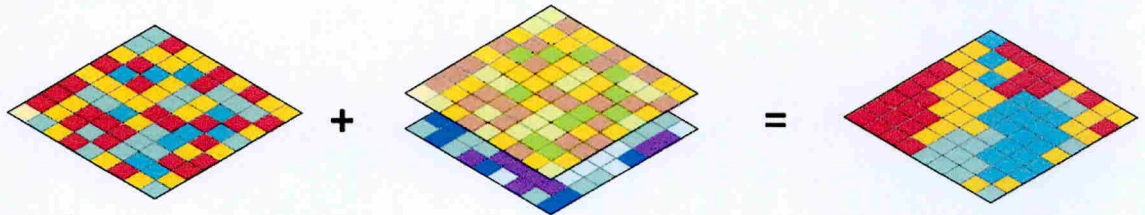
2. The species distribution map/s are compiled and refined.



3. The species sensitivity map is created

4. Additional land use and land cover data are incorporated.

5. The final species sensitivity map is calculated and generated.



Source: BirdLife International.

GEOGRAPHICAL COVERAGE

While the goal for AVISTEP is to have global coverage, it is currently capable of surveying the following countries in Asia:

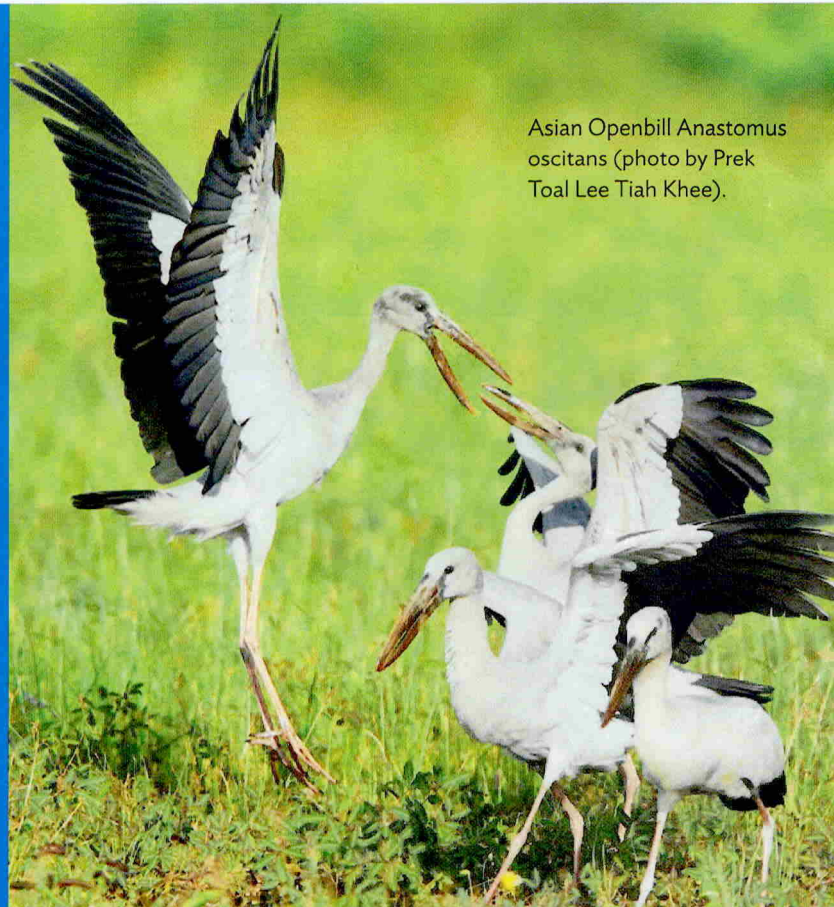
INDIA

NEPAL





THAILAND

VIET NAM

The intention is that the tool will be rapidly expanded to other countries in Asia and throughout the world.



THE BENEFITS OF USING AVISTEP

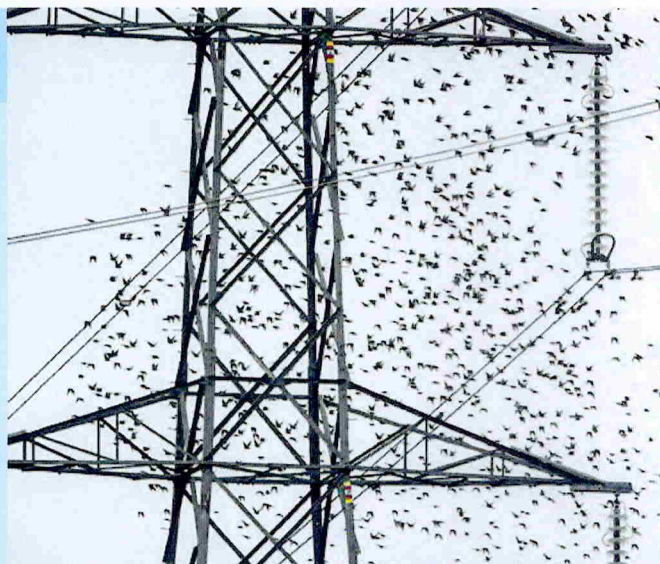
-  1 Provides biodiversity insight early in the planning cycle when development can be steered towards low-risk sites.
-  2 Speeds up renewable energy expansion by stepping up the mitigation measures that developers can apply to ensure that projects are viable and not controversial.
-  3 Provides developers and financiers an upfront understanding of the biodiversity situation so that they are better prepared and can factor suitable mitigation into the project design from the outset.
-  4 Helps boost renewable energy growth by encouraging strategic planning to utilize the available resources and areas for expansion.

Explore and use the mapping tool via

avistep.birdlife.org

To learn more about supporting AVISTEP, expanding the features, and/or incorporating it in your decision-making, please email

avistep@birdlife.org



Overhead electricity wires are a serious problem for some bird species (photo by David Broadbent-rspb-images.com).

ADB

ASIAN DEVELOPMENT BANK

ADB is committed to achieving a prosperous, inclusive, resilient, and sustainable Asia and the Pacific, while sustaining its efforts to eradicate extreme poverty. Established in 1966, it is owned by 68 members—49 from the region. Its main instruments for helping its developing member countries are policy dialogue, loans, equity investments, guarantees, grants, and technical assistance.



BIRDLIFE INTERNATIONAL is a global partnership of conservation organizations (NGOs) that strives to conserve birds, their habitats and global biodiversity, working with people towards sustainability in the use of natural resources. Together there are over 100 BirdLife Partners worldwide – one per country or territory – and growing.



In 2006, the **REPUBLIC OF KOREA E-ASIA AND KNOWLEDGE PARTNERSHIP FUND** was established to contribute to poverty reduction in Asia and the Pacific by improving access to information and communications technology and facilitating knowledge sharing and partnerships.

ASIAN DEVELOPMENT BANK
6 ADB Avenue, Mandaluyong City
1550 Metro Manila, Philippines
www.adb.org



Creative Commons Attribution 3.0 IGO license (CC BY 3.0 IGO)

© 2022 ADB. The CC license does not apply to non-ADB copyright materials in this publication.
<https://www.adb.org/terms-use#openaccess>
<http://www.adb.org/publications/corrigenda>
Publication Stock No. ARM220485-2